



LAKE VIEW

- 1½ story on an unfinished basement with 4 bedrooms / 3 baths, utility room and a loft
- 2,118 heated square feet, 1,957 unheated square feet
- An optional finished basement adds 1 bedroom, bath, family room, and 1,082 heated square feet
- Front and rear shed porches and a large gable porch at the rear
- Framed home with low-maintenance fiber cement siding with a 15-year paint warranty and 50-year product warranty
- Multiple log profiles and log corner styles are also available
- Ventless gas fireplace
- Various stone covered foundation options are available
- Various interior finishing options are available



©2013 The Powell Group - updated 2/1/13

See Reverse for Floor Plans and Square Footage Totals

THE POWELL
GROUP

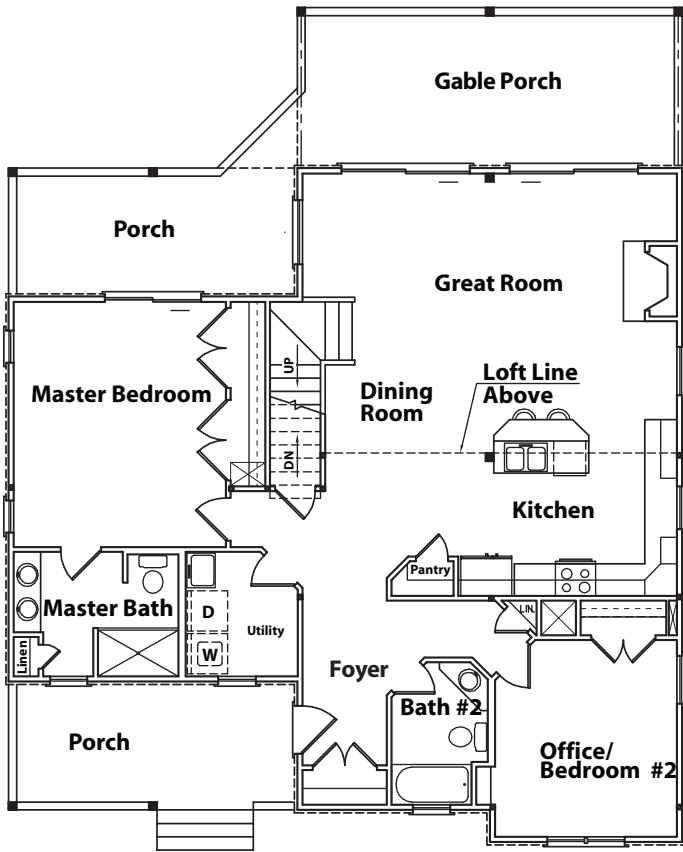
A Custom Home
Development
Company

4360A Dale Farm Road
Morganton, NC 28655

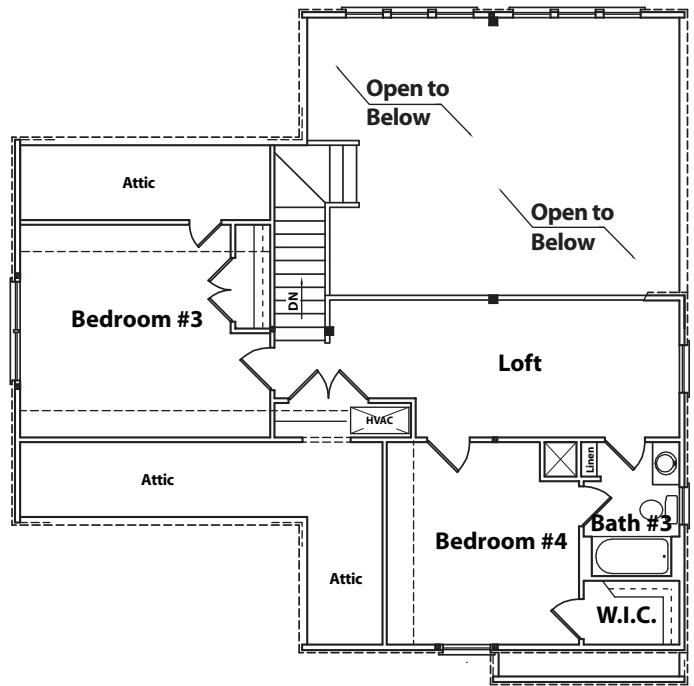
mobile 828-443-9324 • office 828-438-9077 • fax 828-438-1521
email info@thepowellgroup.net

www.thepowellgroup.net

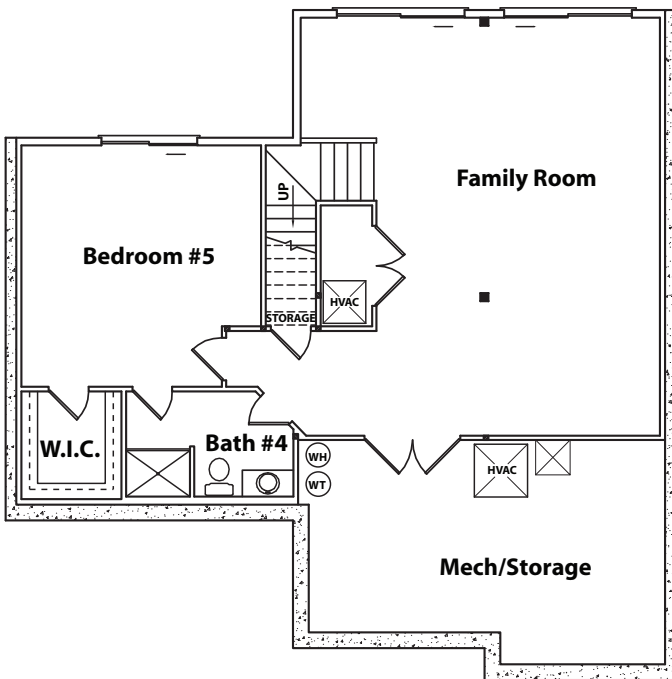
1st Floor Plan



2nd Floor Plan



Optional Basement Floor Plan



LAKE VIEW

SQUARE FOOT TOTALS

1st Floor = 1,416 ft²

2nd Floor = 702 ft²

Optional Basement = 1,082 ft²

Total Heated ft² = 3,200 ft²

Unfinished Basement = 334 ft²

Deck = 13 ft²

Porch = 528 ft²

Total Unheated ft² = 885 ft²