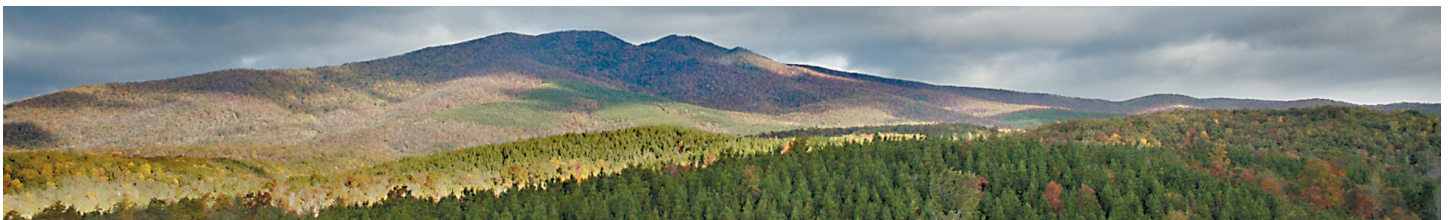




ROCKY CREEK

- 1½ story on an unfinished basement with 3 bedrooms/2 baths and a loft
- 1,464 heated square feet, 1,512 unheated square feet
- An optional finished basement adds 1 or 2 bedrooms, bath, family room, and 896 heated square feet
- Covered porch and open deck
- 6 x 12 logs on main level with matching log siding on the second level
- Multiple log profiles and log corner styles are available
- Ventless gas fireplace
- Various stone covered foundation options are available
- Various interior finishing options are available



©2013 The Powell Group - updated 2/1/13

See Reverse for Floor Plans and Square Footage Totals

THE POWELL
GROUP

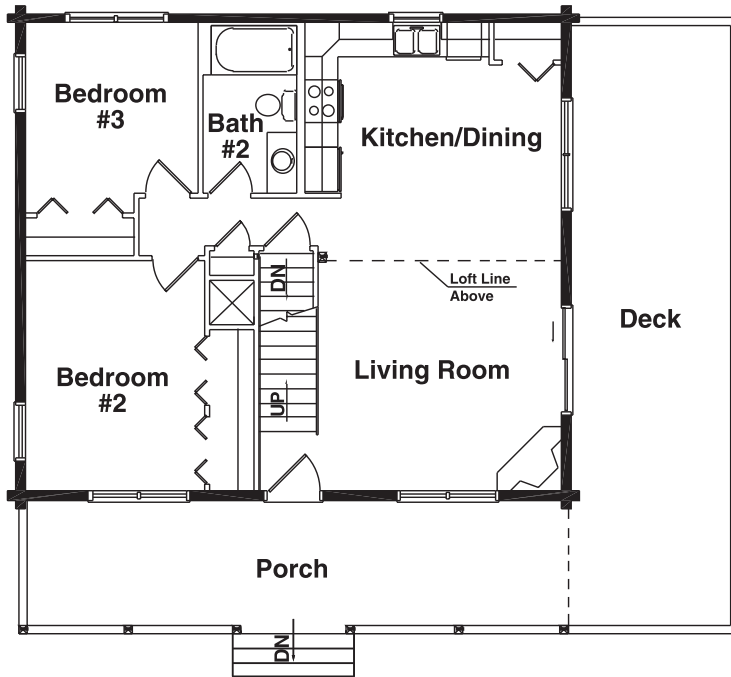
A Custom Home
Development
Company

4360A Dale Farm Road
Morganton, NC 28655

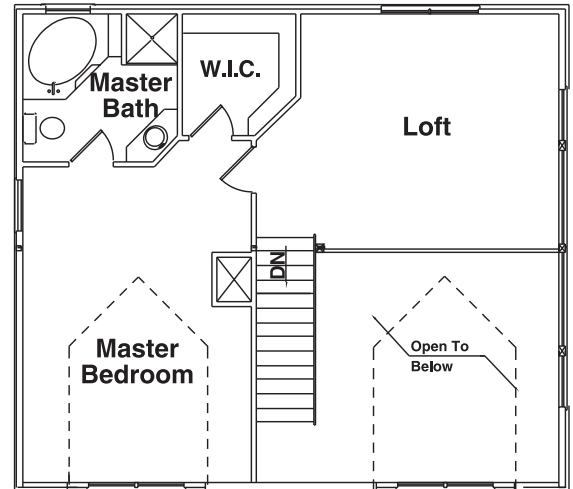
mobile 828-443-9324 • office 828-438-9077 • fax 828-438-1521
email info@thepowellgroup.net

www.thepowellgroup.net

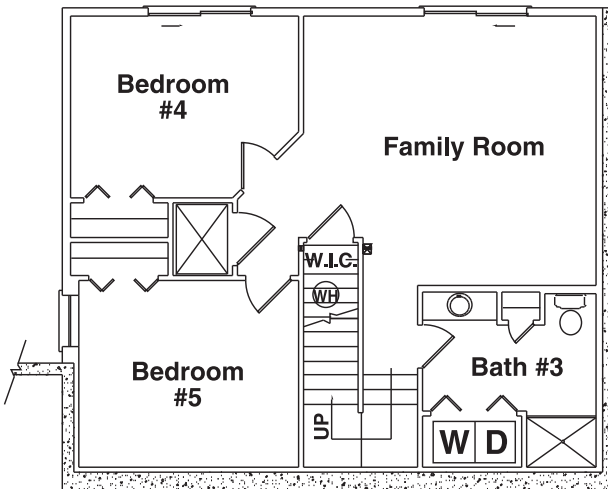
1st Floor Plan



2nd Floor Plan



Optional Basement Floor Plan



ROCKY CREEK

SQUARE FOOT TOTALS

1st Floor = 896 ft²
 2nd Floor = 568 ft²
 Optional Basement = 896 ft²

Total Heated ft² = 2,360 ft²

Deck = 360 ft²
 Porch = 256 ft²

Total Unheated ft² = 616 ft²