



HIDEOUT

- 1½ story with 2 bedrooms/2 baths and a loft, built on a crawlspace
- 1,217 heated square feet, 472 unheated square feet
- An optional finished or unfinished basement can be added. A finished basement adds 1 bedroom, bath, family room, and 720 heated square feet
- Covered porch and open deck
- 6 x 8 D logs on main level with matching log siding on the second level
- Multiple log profiles and log corner styles are available
- Ventless gas fireplace
- Various stone covered foundation options are available
- Various interior finishing options are available



©2013 The Powell Group - updated 2/1/13

See Reverse for Floor Plans and Square Footage Totals

THE POWELL
GROUP

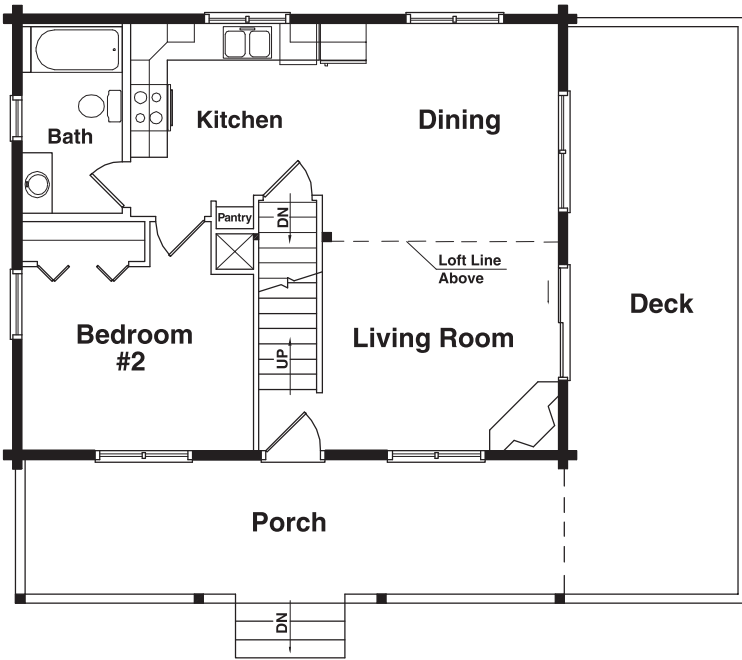
A Custom Home
Development
Company

4360A Dale Farm Road
Morganton, NC 28655

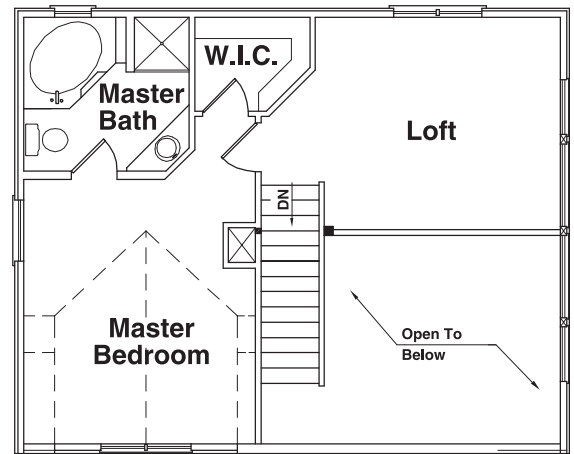
mobile 828-443-9324 • office 828-438-9077 • fax 828-438-1521
email info@thepowellgroup.net

www.thepowellgroup.net

1st Floor Plan

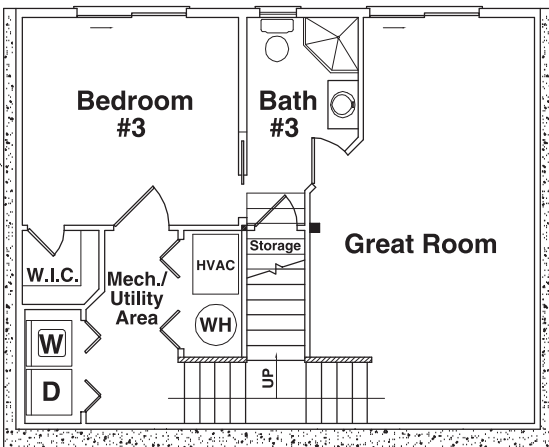


2nd Floor Plan



HIDEOUT

Optional Basement Floor Plan



SQUARE FOOT TOTALS

1st Floor = 720 ft²
 2nd Floor = 497 ft²
 Optional Basement = 720 ft²

Total Heated ft² = 1,937 ft²

Deck = 320 ft²
 Porch = 240 ft²

Total Unheated ft² = 560 ft²